



Complete CFD/CAE Visualization

Today's engineers are under increasing pressure to tackle more complex engineering problems in less time. Tecplot 360 EX enables you to quickly evaluate complex simulation results, regardless of size, on your engineering workstation. Plot your results accurately and reliably with a post-processor that is easy to use and offers the most visually powerful output.

CFD/CAE Data Analysis

- Load your data with support for 32 CFD, FEA, structural analysis, and industry-standard data formats.
- Unique multi-frame environment with multiple pages for reporting and comparing solutions.
- Understand XY, Polar, 2D and 3D plots using unique linking capabilities.
- Animate and step through transient solutions with video player-style controls like forward, backward, loop, bounce, and throttle control.
- Explore with interactive slicing, iso-surface, and streamtrace tools.
- Automatically extract features such as vortex cores, shock surfaces, and other key flow features.

Workstation Performance

- Load billion cell solutions on typical engineering workstations.
- Process typical engineering analysis workflows 10 to 100 times faster.
- Reduced memory required to load data by 80%.
- Leverage multi-core desktop systems with multi-threaded capability.
- Reduce processing time from minutes to seconds with subzone load-on-demand technology.

Verification and Validation

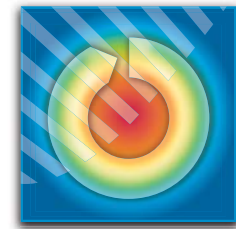
- Assess grid quality with 28 grid quality functions including aspect ratios, skewness, orthogonality, and stretch factors.
- Compare numerical models with test data in the same window.
- Estimate the order of accuracy of your numerical solutions with Richardson extrapolation analysis.
- Interactively explore and sweep through the flow field to check that flow features align with the grid.
- Compare multiple models simultaneously, including Fluid-structure Interaction (FSI) visualization.

Reporting and Publication

- Copy and paste images directly into Microsoft Office applications.
- Export professional, presentation-quality vector and raster formats.
- Present multiple, time-linked views of your plots with Tecplot 360's unique multi-frame layout workspace.
- Publish professional quality 2D and XY-line plots.

Automation and Scripting

- Instantly re-create an old plot, or apply the same style attributes and layouts to a different set of data with layout and style files.
- Analyze and automate your work with the power of Python.
- Record macros with fully integrated and well documented language capabilities.
- Build custom applications with the Tecplot ADK.



Try
Tecplot 360 EX:

www.tecplot.com/trial

